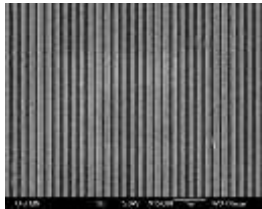
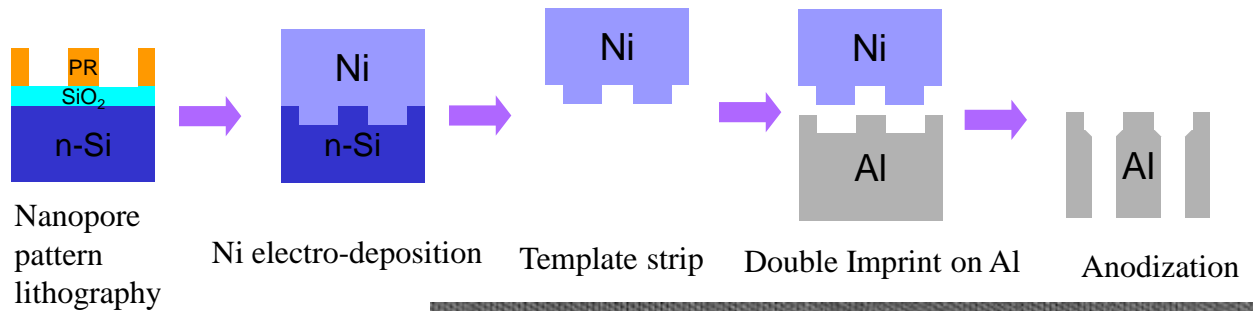


Creative Periodic Nanopore Arrays With Double Line Imprint Technique

Sang- Yeob Sung and Bethanie J. H. Stadler
Electrical and Computer Engineering, University of Minnesota

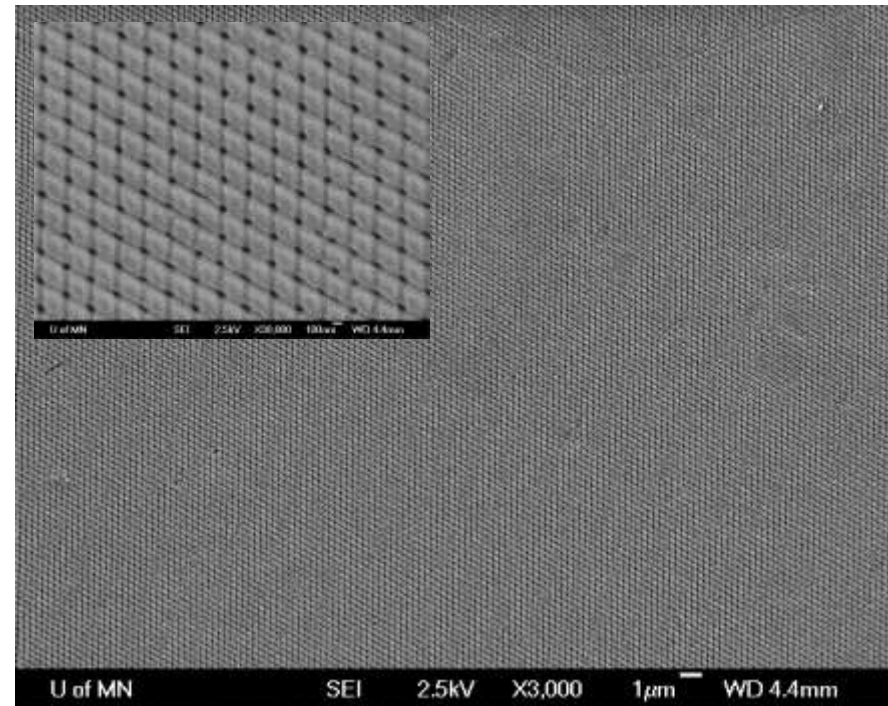
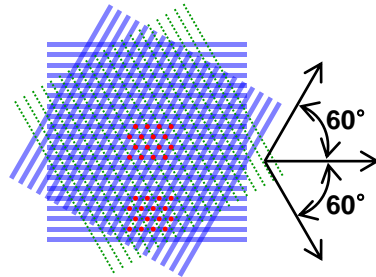
Motivation

- Fabricate large area periodic nanopore arrays.
- Mass production and reduce fabrication cost.



Si Line Mold

(Made by Lightsynth Technologies)



SEM of Anodized Aluminum

Fabrication

- Ni is directly seedless electro deposited on Si nanopore array mold which is made by e-beam lithography or laser interference lithography.
- Double imprint on Al foil
- Fabricating self grow nanopore array with anodization Al foil.